

**FEBRUARY 25**



## **SUSTAINABILITY AND SOCIETY'S PRIORITIES**

**SPEAKER:**

**Jon Plaut**

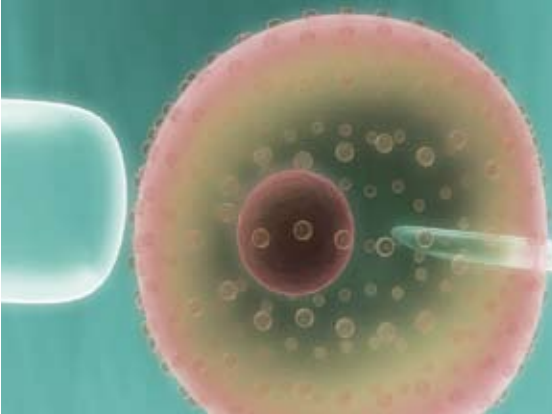
President, Global Learning, Inc.

**11:30 A.M. – 1:00 P.M.**

**Campus Center Ballroom**

Co-sponsors: NJIT Technology and Society Forum Committee, Albert Dorman Honors College, Sigma Xi

**MARCH 31**



## **EVOLUTION OF LIFE, SEX AND OTHER MERGERS**

**SPEAKER:**

**Lynn Margulis**

Professor, Department of Geosciences  
University of Massachusetts – Amherst

**11:30 A.M. – 1:00 P.M.**

**Campus Center Ballroom**

Co-sponsors: NJIT Technology and Society Forum Committee, Albert Dorman Honors College, Murray Center for Women in Technology, Sigma Xi

**APRIL 2**



## **MEMBERS OF THE NEW JERSEY SYMPHONY ORCHESTRA**

Performing the Schubert octet scored for two violins, viola, cello, double bass, clarinet, bassoon and French horn

**3:00 – 4:30 P.M.**

**Campus Center Atrium**

Co-sponsors: NJIT Technology and Society Forum Committee, Albert Dorman Honors College, Sigma Xi

**APRIL 7**



## **VIOLINIST RIEKO KAWABATA**

Performing César Franck's sonata for violin and piano

**11:30 A.M. – 1:00 P.M.**

**Jim Wise Theater**

Co-sponsors: NJIT Technology and Society Forum Committee, Albert Dorman Honors College, Sigma Xi

**APRIL 30**



## **ENGINEERING EDUCATION FOR THE 21ST CENTURY**

**SPEAKER:**

**Charles Vest**

President, American Academy of Engineering  
President Emeritus, Massachusetts Institute of Technology

**3:00 – 4:30 P.M.**

**Campus Center Ballroom**

Co-sponsors: NJIT Technology and Society Forum Committee, Albert Dorman Honors College, Sigma Xi



## LEARNING AND THE LONGER VIEW

A truly inclusive education fosters perspectives on the human experience that look far beyond the present. Such an education promotes awareness of the conditions and forces that shape individuals over a lifetime, the nature of society over centuries, and the evolution of the biosphere over millennia. These influences are numerous and diverse, ranging from physiology and economics to political beliefs and climate change. And woven throughout the human experience is the creative spirit that manifests itself in art.

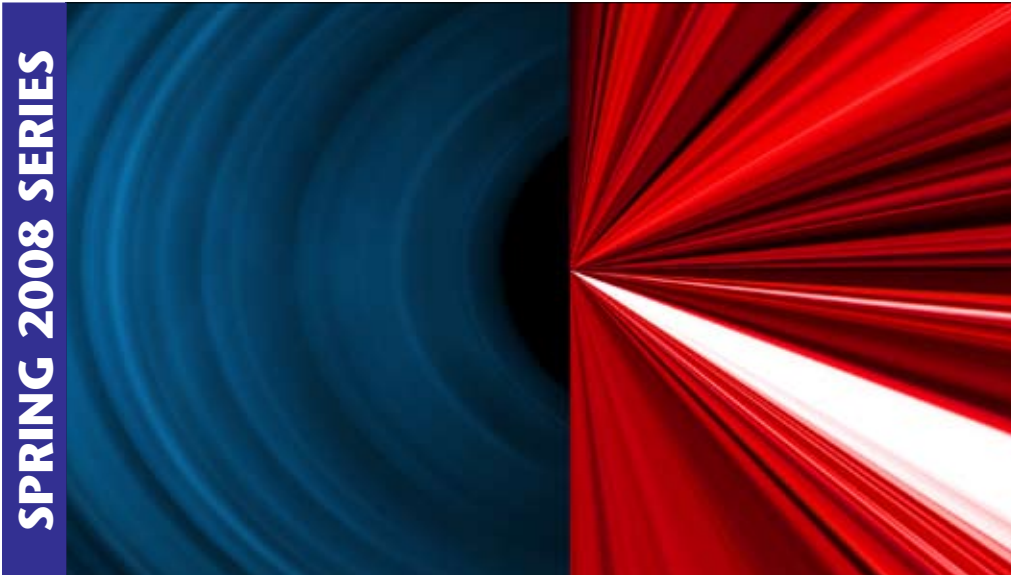
Once again, for spring 2008, the NJIT Technology and Society Forum presents speakers who encourage taking an insightful, longer view of our individual and collective journeys into the future. Two musical presentations have also been scheduled, interludes that underline an aspect of creativity that finds expression in all places and times.

*For more information about the NJIT Technology and Society Forum, contact Jay Kappraff at [kappraff@adm.njit.edu](mailto:kappraff@adm.njit.edu) or 973-596-3490.*

*On the Web, visit <http://tsf.njit.edu> for comprehensive information about the Spring 2008 Technology and Society Forum Series and previous Forum presentations, including a video archive.*

Sponsored by the NJIT Technology and Society Forum Committee. The 2007-2008 Technology and Society Forum presentations are also made possible by support from AT&T and Hewlett-Packard.

NJIT welcomes attendees from Essex County College, Rutgers-Newark, and the University of Medicine and Dentistry of New Jersey.



## THE NJIT TECHNOLOGY AND SOCIETY FORUM

PERSPECTIVES  
ON THE 21ST CENTURY  
AND BEYOND



## SPRING 2008 SERIES

### THE NJIT TECHNOLOGY AND SOCIETY FORUM

PERSPECTIVES  
ON THE 21ST CENTURY  
AND BEYOND

